



## **The Project Management Software – for Outlook, Web and Smartphone**

InLoox PM 9.x Configure Microsoft SQL Server for SQL-Authentication

An InLoox Whitepaper

Published: April 2016

You can find up-to-date information at <http://www.inloox.com>

The information contained in this document represents the current view of InLoox on the issues discussed as of the date of publication. Because InLoox must respond to changing market conditions, it should not be interpreted to be a commitment on the part of InLoox, and InLoox cannot guarantee the accuracy of any information presented after the date of publication.

This White Paper is for informational purposes only. INLOOX MAKES NO WARRANTIES, EXPRESS, IMPLIED OR STATUTORY, AS TO THE INFORMATION IN THIS DOCUMENT.

Complying with all applicable copyright laws is the responsibility of the user. Without limiting the rights under copyright, no part of this document may be reproduced, stored in or introduced into a retrieval system, or transmitted in any form or by any means (electronic, mechanical, photocopying, recording, or otherwise), or for any purpose, without the express written permission of InLoox GmbH.

© 2016 InLoox GmbH. All rights reserved.

IQ medialab and InLoox are either registered trademarks or trademarks of InLoox GmbH in Germany and/or other countries.

The names of actual companies and products mentioned herein may be the trademarks of their respective owners.

---

## Content

Configure Microsoft SQL Server for SQL-Authentication.....	1
System requirements.....	1
Database configuration for SQL-Authentication .....	1
Create a connection key with the System Manager.....	4

# Configure Microsoft SQL Server for SQL-Authentication

## System requirements

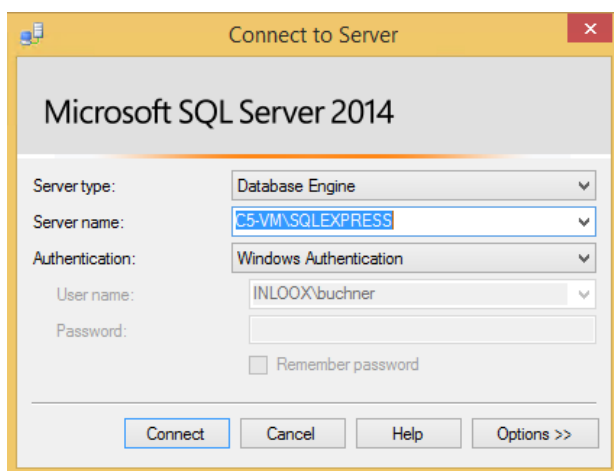
- Microsoft SQL Server or Microsoft SQL Server Express Edition
- SQL Management Studio Express

Microsoft SQL Server Express Edition as well as the SQL Management Studio Express can be downloaded free of charge under the following link:

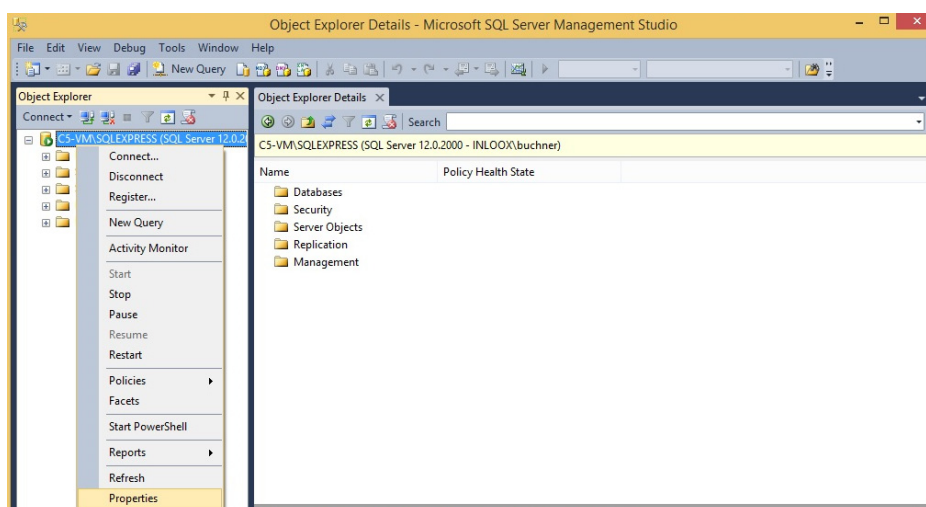
<http://www.microsoft.com/en-US/download/details.aspx?id=42299>

## Database configuration for SQL-Authentication

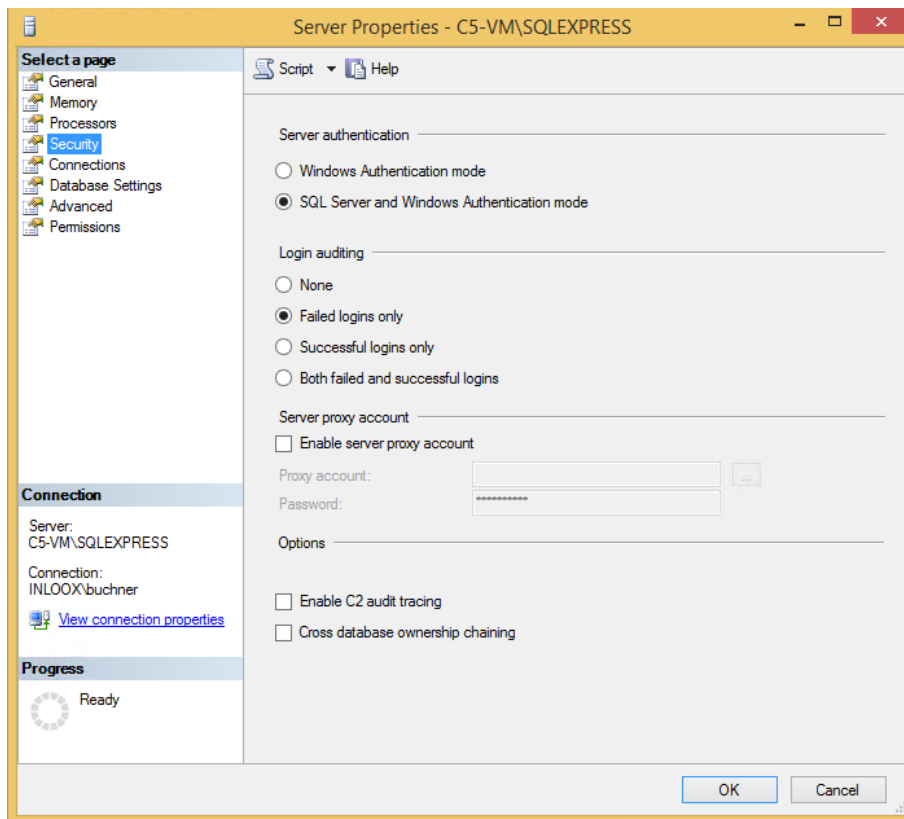
1. Start SQL Management Studio and connect to your database



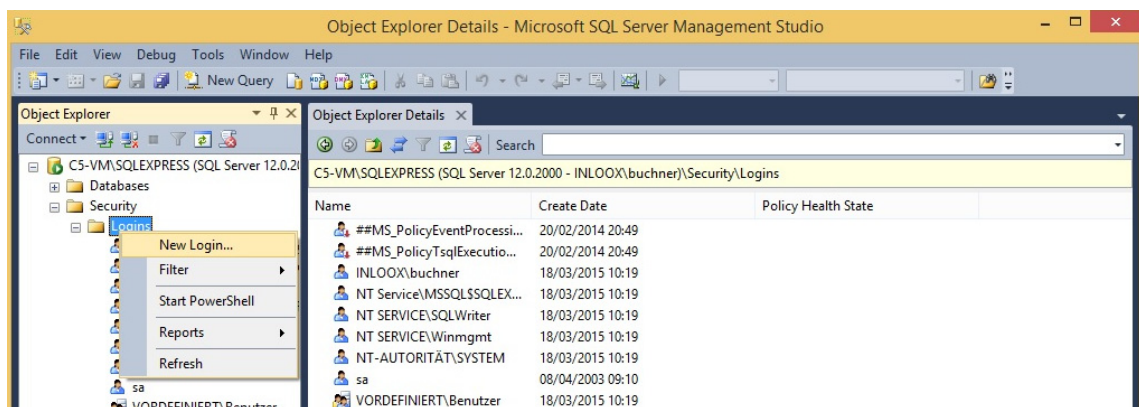
2. Right click on the entry of the server in the list and select **Properties** in the context menu



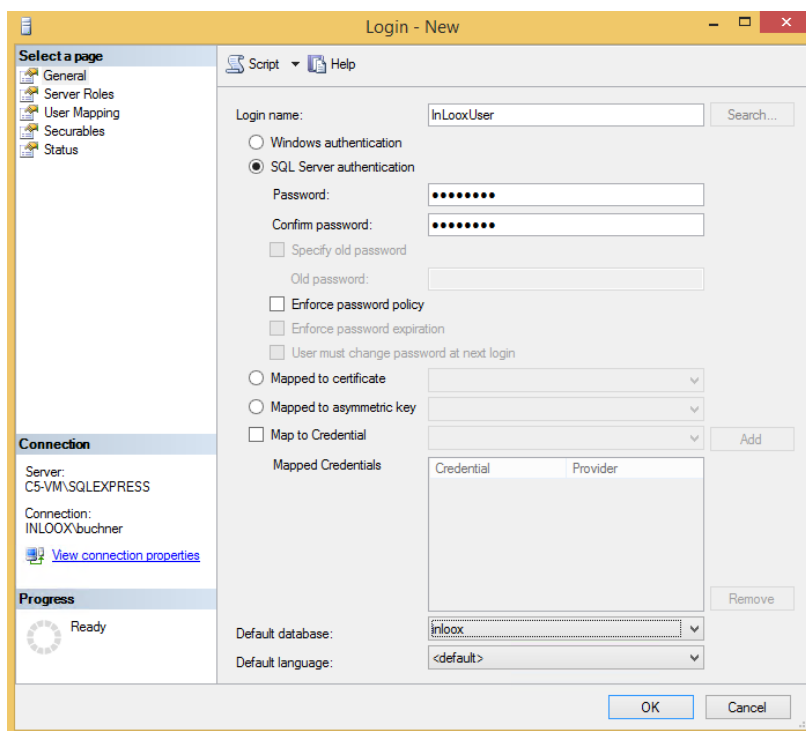
- In the dialog click on **Security**.  
Select SQL Server- and Windows-Authentication



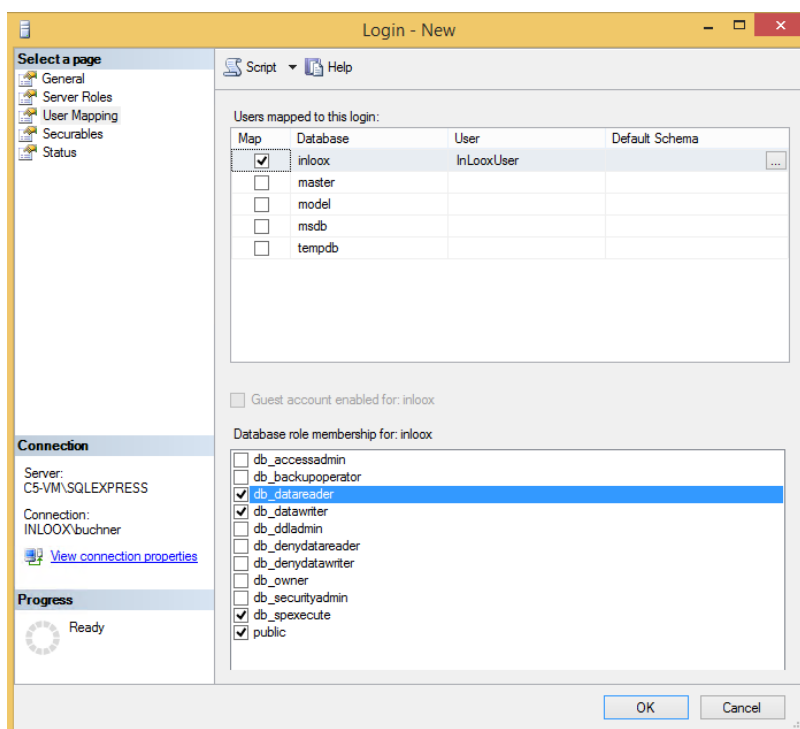
- Click now on **OK**.
- Click now on **Security-** > right click on **Logins-** > **New Login**



6. Select **SQL Server-Authentication** in the next dialog and enter a user name and a password.  
Deactivate **Enforce password policy**  
Select **InLoox** as standard database



7. Click on **User Mapping**, select the database (InLoox) and set the permissions **public**, **db\_datareader**, **db\_datawriter**, **db\_spexecute**. Accept with **OK**.



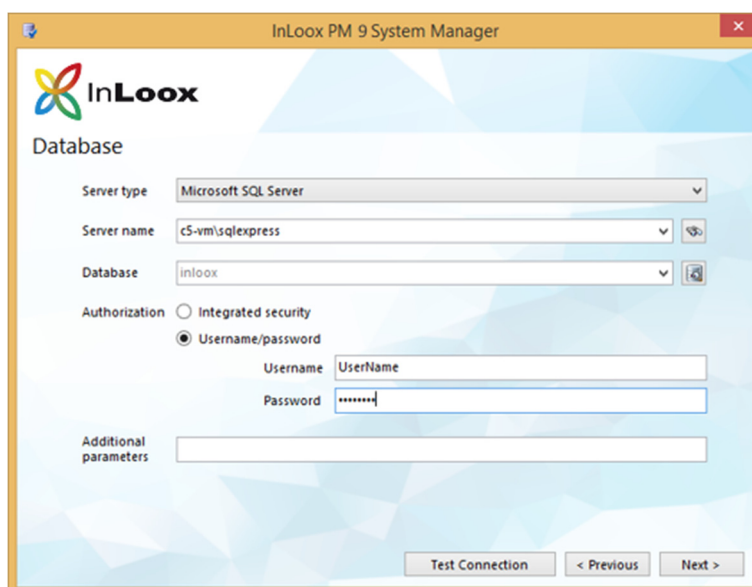
8. Right click on the entry of the server again and select **Restart**. The SQL Server will be restarted and the authentication settings are used.

## Create a connection key with the System Manager

Download the System Manager from:

<http://www.inloox.com/support/downloads/additional-software/>

1. Start the System Manager
2. Select the option **Connect**
3. Specify the server name, select **username/password** and enter the user name and password which were created before.

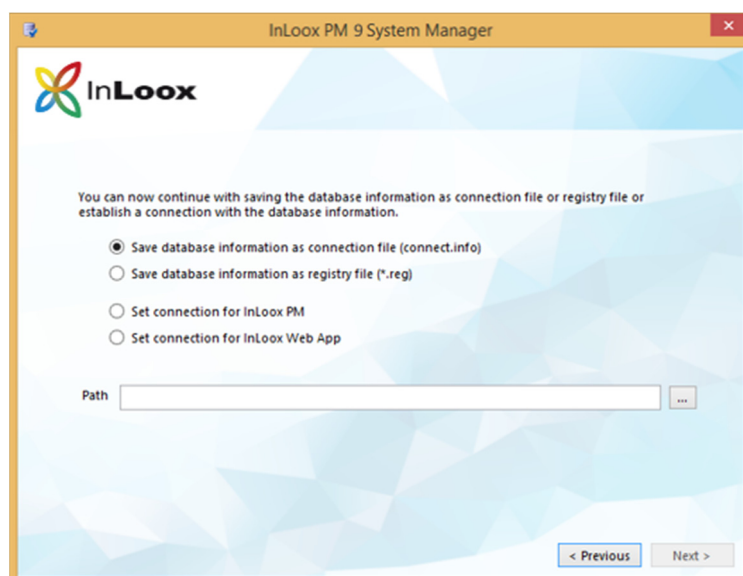


The screenshot shows the 'Database' configuration window in the InLoox PM 9 System Manager. The window title is 'InLoox PM 9 System Manager'. The InLoox logo is in the top left. The 'Database' section contains the following fields and options:

- Server type: Microsoft SQL Server (dropdown)
- Server name: c5-vm/sqlexpress (dropdown)
- Database: inloox (dropdown)
- Authorization:  Username/password (selected),  Integrated security
- Username: UserName (text input)
- Password: \*\*\*\*\* (password input)
- Additional parameters: (empty text input)

At the bottom right, there are three buttons: 'Test Connection', '< Previous', and 'Next >'.

4. Click on **Create Connection**



The screenshot shows the 'Save database information' dialog box in the InLoox PM 9 System Manager. The window title is 'InLoox PM 9 System Manager'. The InLoox logo is in the top left. The dialog box contains the following text and options:

You can now continue with saving the database information as connection file or registry file or establish a connection with the database information.

- Save database information as connection file (connect.info)
- Save database information as registry file (\*.reg)
- Set connection for InLoox PM
- Set connection for InLoox Web App

Below the options is a 'Path' text input field with a browse button (...).

At the bottom right, there are two buttons: '< Previous' and 'Next >'.

- 
5. You have 4 possibilities now:
    - You can store the connection key as **Connection File**, which you can use for new client installations. Simply put the generated file into the installation folder.
    - You can also generate a **Registry Import File**. It can be used to change the database on existing clients. Make a double click on the generated file.
    - Save the new information directly into the registry of the current client.
    - Save the new information for the InLoox Web App as connect.info. Simply put the generated file into the installation folder of InLoox Web App. Thereby use the subfolder “Configuration”.
  6. The option **Database Configuration** enables you to check whether the user has all necessary permissions for the database.