



Project management - integrated into Outlook

InLoox PM 7.x update to InLoox PM 8.x

An InLoox Whitepaper

Published: April 2014

Copyright: © 2014 InLoox GmbH.

You can find up-to-date information at <http://www.inloox.com>

Contents

| | |
|-------------------------------------|---|
| General information | 1 |
| Update of the InLoox database | 2 |

The information contained in this document represents the current view of InLoox on the issues discussed as of the date of publication. Because InLoox must respond to changing market conditions, it should not be interpreted to be a commitment on the part of InLoox, and InLoox cannot guarantee the accuracy of any information presented after the date of publication.

This White Paper is for informational purposes only. INLOOX MAKES NO WARRANTIES, EXPRESS, IMPLIED OR STATUTORY, AS TO THE INFORMATION IN THIS DOCUMENT.

Complying with all applicable copyright laws is the responsibility of the user. Without limiting the rights under copyright, no part of this document may be reproduced, stored in or introduced into a retrieval system, or transmitted in any form or by any means (electronic, mechanical, photocopying, recording, or otherwise), or for any purpose, without the express written permission of InLoox GmbH.

© 2014 InLoox GmbH. All rights reserve.

IQ medialab and InLoox are either registered trademarks or trademarks of InLoox GmbH in Germany and/or other countries.

The names of actual companies and products mentioned herein may be the trademarks of their respective owners.

General information

This document describes the steps required to successfully update an InLoox 7 database.

The update of an InLoox PM 7 version to InLoox PM 8.x requires the update of the InLoox database. It is necessary to back-up the InLoox database before the update, since it is not possible to downgrade back to the earlier version.



Please note that the support of Outlook 2000 and Outlook XP, Outlook 2003 and has ended with InLoox PM 7.6.4.



Please note: To be able to use InLoox PM 8 you need a **valid InLoox PM 8 license key**. Please contact us or your local reseller if you do not have an InLoox PM 8 license key yet. We are happy to help you.

Proceed with the following steps to back-up the database.

1. Ensure that there are no users currently connected to the database
2. Connect to the InLoox database and make a complete backup.
All supported database manufacturers provide a description and the tools for backing up data
3. Update the InLoox database as described in the following chapter.

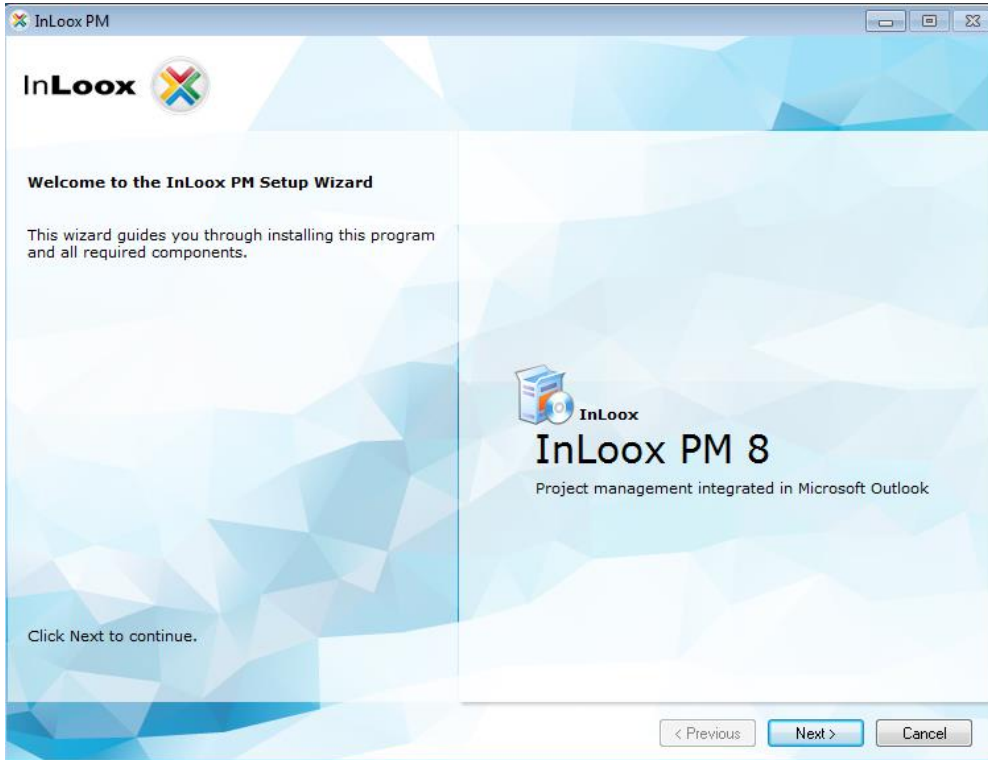
If you are not sure whether a database update is required or not, you can always try to run an update. If so, the setup indicates that the database is up-to-date.



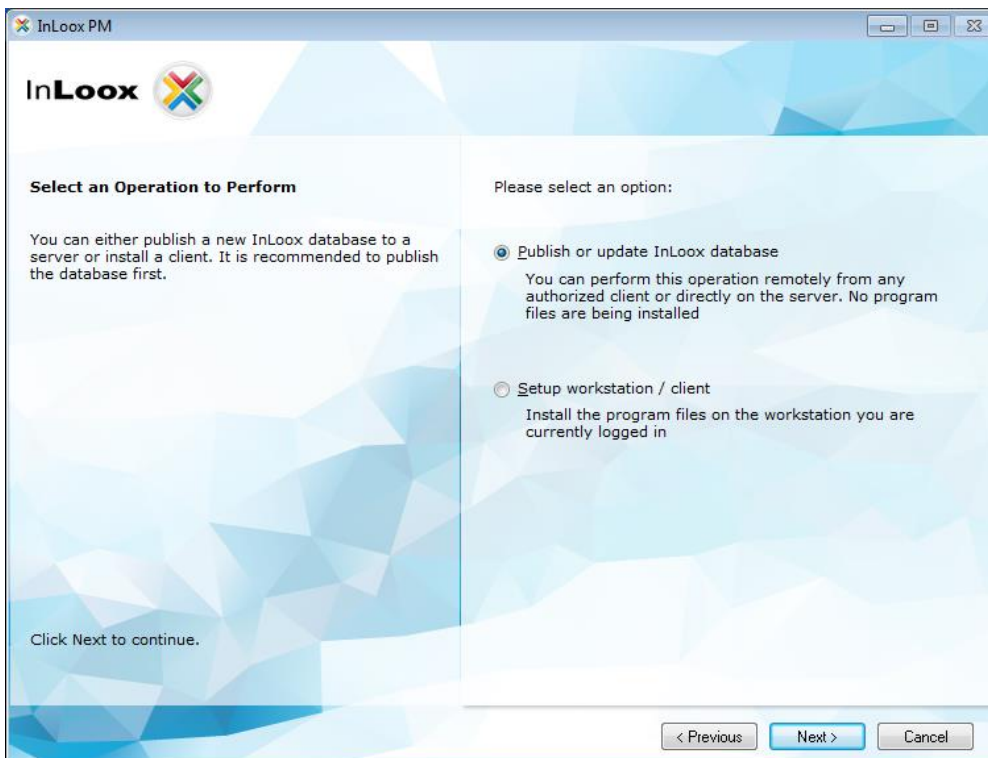
Please note that the InLoox Web App 7.6.3 **is not** compatible with the Database Version 8.0. A compatible Version is being prepared.

Update of the InLoox database

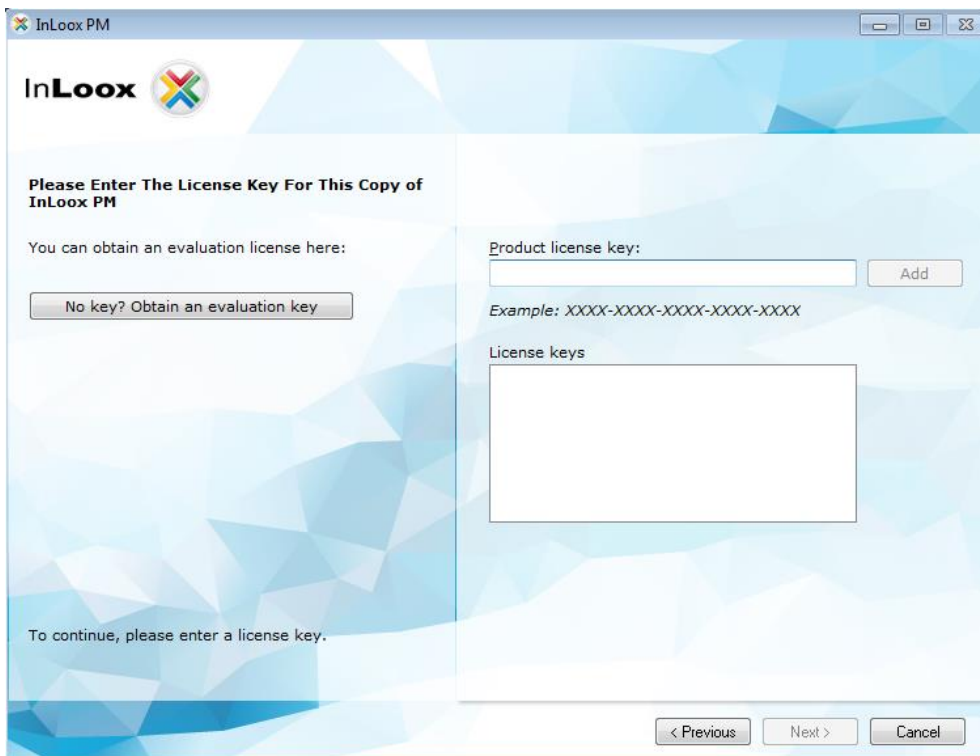
1. Start the setup file and choose the language for installation
2. Click on Next



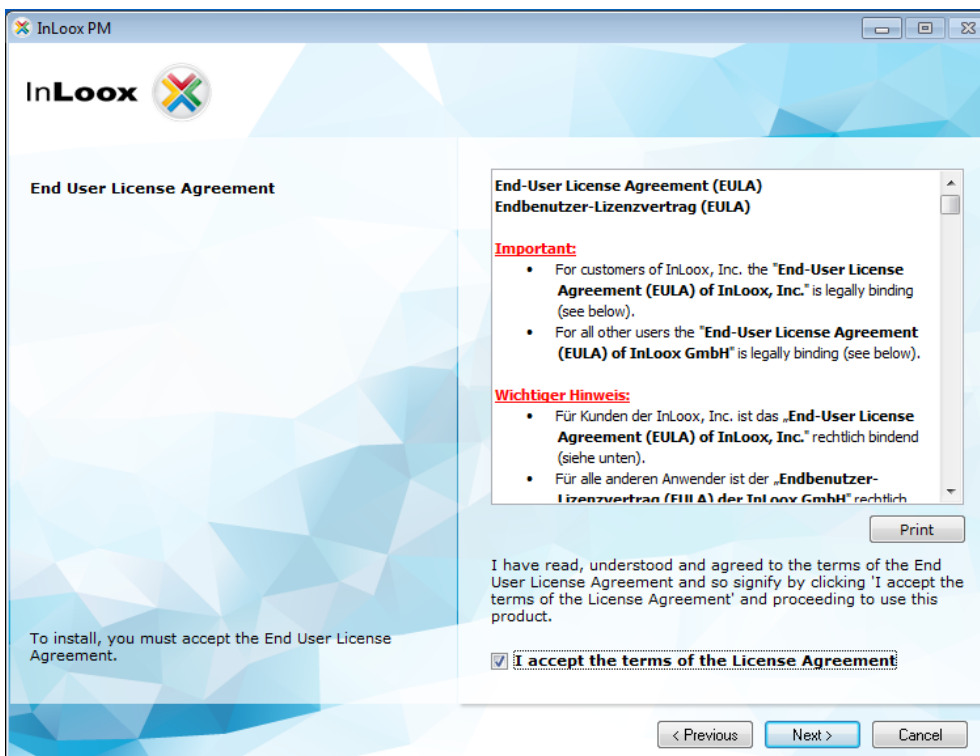
3. Choose "Publish or update InLoox database"



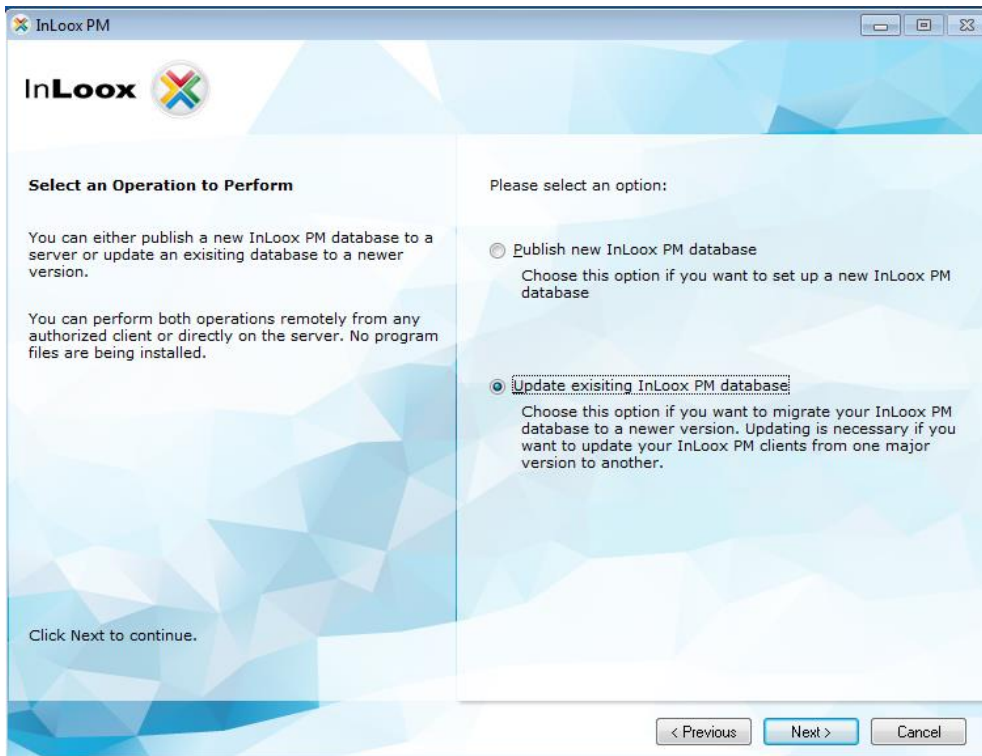
4. Enter your license key



5. After accepting the license agreement click on Next

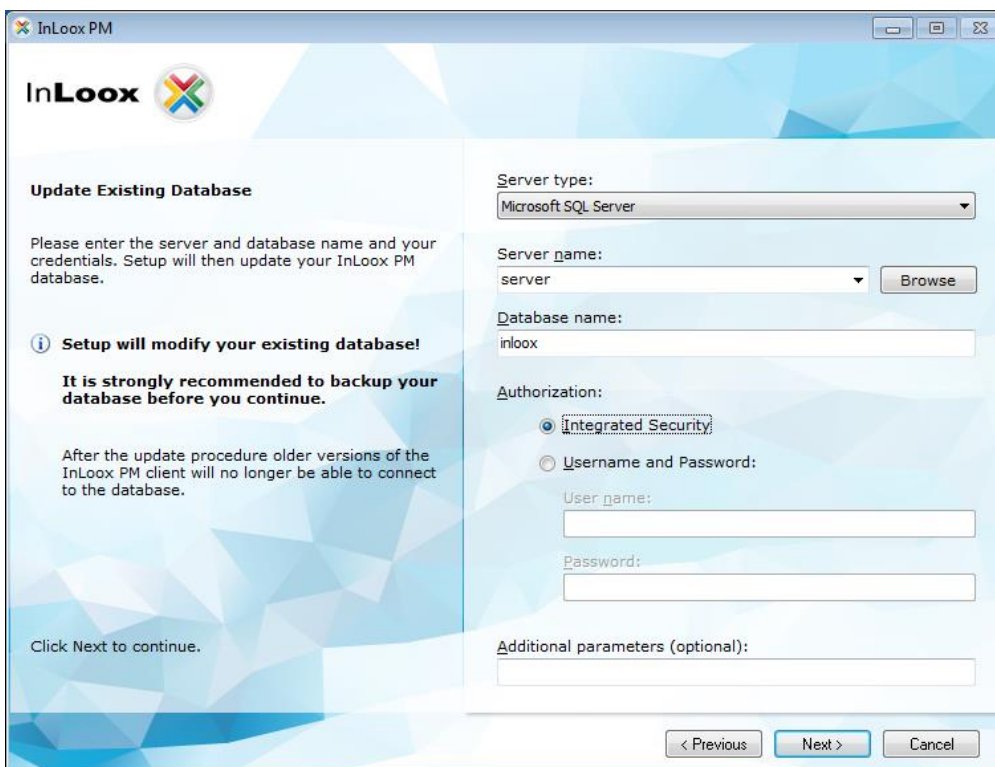


6. Choose “Update existing InLoox database”

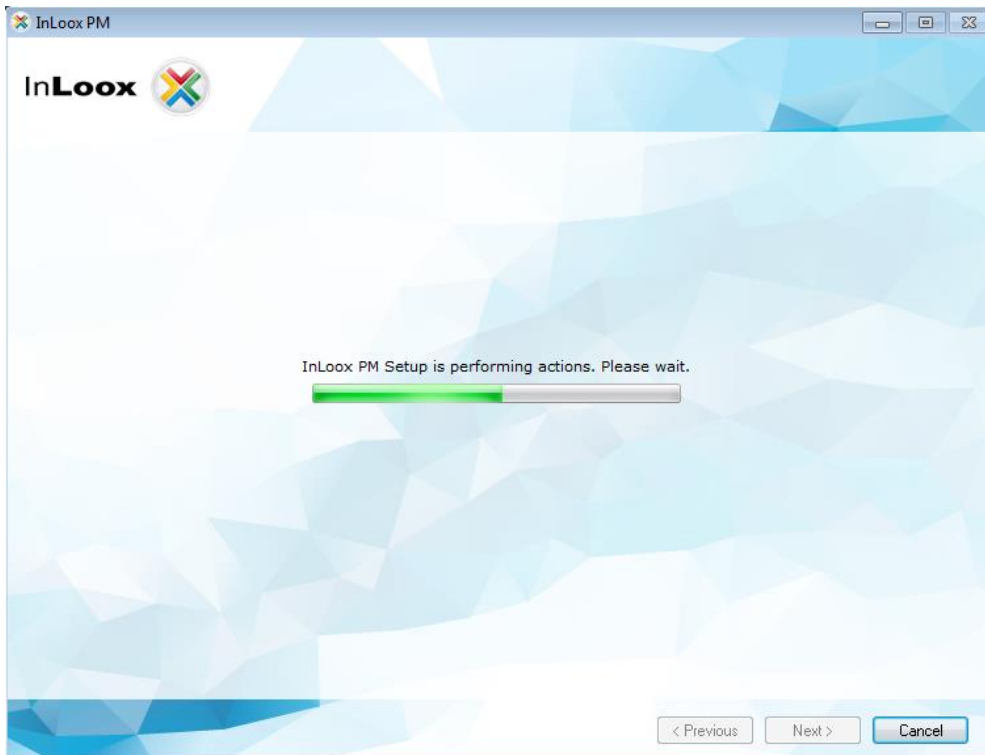


7. Enter the data to connect to your InLoox database and click on **Next**

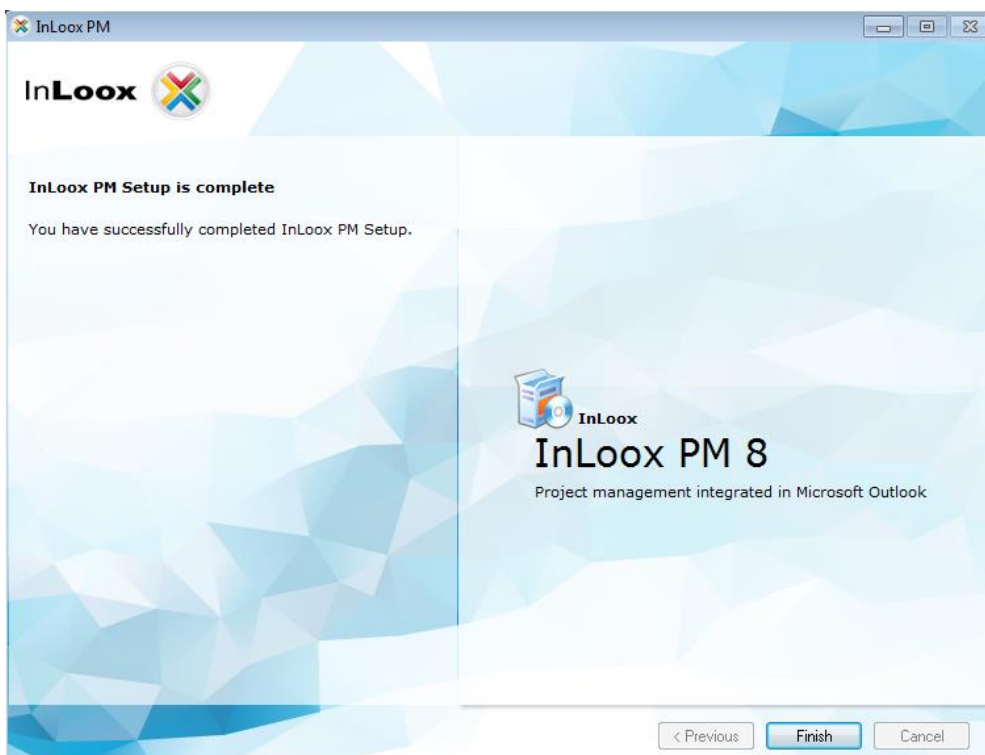
Important: You have to use the same database logon for the upgrade as you used for the original installation. Otherwise new Tables might be created in a wrong configuration. If you use a Microsoft SQL Server, it is advisable to use the sa-account.



8. The setup now updates the InLoox database automatically. Please note that this process can take several minutes depending on the amount of data in the database.



9. The update is finished



The InLoox Clients should, now, be updated. To do this, start the setup file on the client computer and choose "Workstation-/Client-Installation". There is no need to uninstall the previous version. The setup routine will take this into consideration.