

InLoox



Project management - integrated into Outlook

InLoox 6.x database import

An IQ medialab Whitepaper

Published: January 2010

You can find up-to-date information at <http://www.inloox.com>

The information contained in this document represents the current view of IQ medialab on the issues discussed as of the date of publication. Because IQ medialab must respond to changing market conditions, it should not be interpreted to be a commitment on the part of IQ medialab, and IQ medialab cannot guarantee the accuracy of any information presented after the date of publication.

This White Paper is for informational purposes only. IQ MEDIALAB MAKES NO WARRANTIES, EXPRESS, IMPLIED OR STATUTORY, AS TO THE INFORMATION IN THIS DOCUMENT.

Complying with all applicable copyright laws is the responsibility of the user. Without limiting the rights under copyright, no part of this document may be reproduced, stored in or introduced into a retrieval system, or transmitted in any form or by any means (electronic, mechanical, photocopying, recording, or otherwise), or for any purpose, without the express written permission of IQ medialab GmbH.

© 2010 IQ medialab GmbH. All rights reserved.

IQ medialab and InLoox are either registered trademarks or trademarks of IQ medialab GmbH in Germany and/or other countries.

The names of actual companies and products mentioned herein may be the trademarks of their respective owners.

Contents

General information.....	1
Why import a database?	1
Recommended approach.....	1
Fresh Database import.....	2
Requirements.....	2
Step by step guide.....	2

General information

Why import a database?

If you like to import an updated database dump (a Script that contains data) into an existing database, then the existing database has to be cleared first. A deletion and new installation of the database is possible, however unfavourable, because database options and permissions are lost.

Recommended approach

The standard procedure covers:

- ✓ **Backup of the** current database
- ✓ **deletion of** all content of the current database
- ✓ **import of** new content of the current database

Fresh Database import

Requirements

The procedure can be executed on the server or a client. You need:

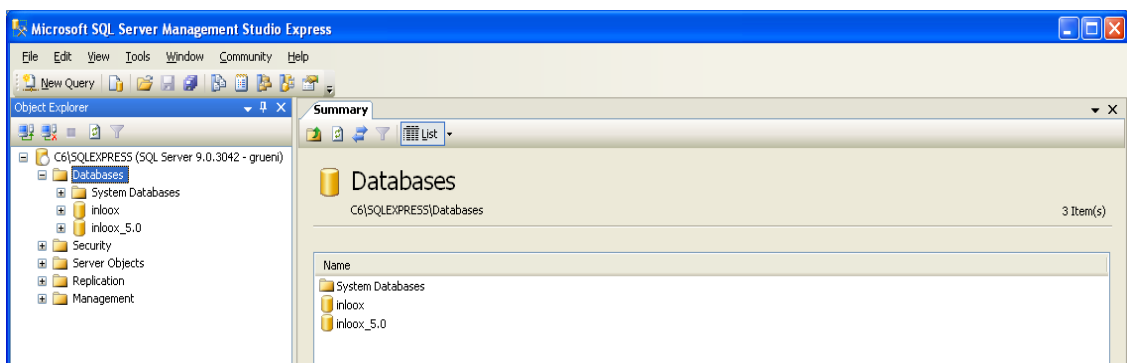
- ✓ **SQL servers 2005 Express, Workgroup, Standard or Enterprise Edition**
- ✓ **SQL Server Management Studio**
- ✓ **The dump file which should be imported**
- ✓ **Administrative database permission**

Step by step guide

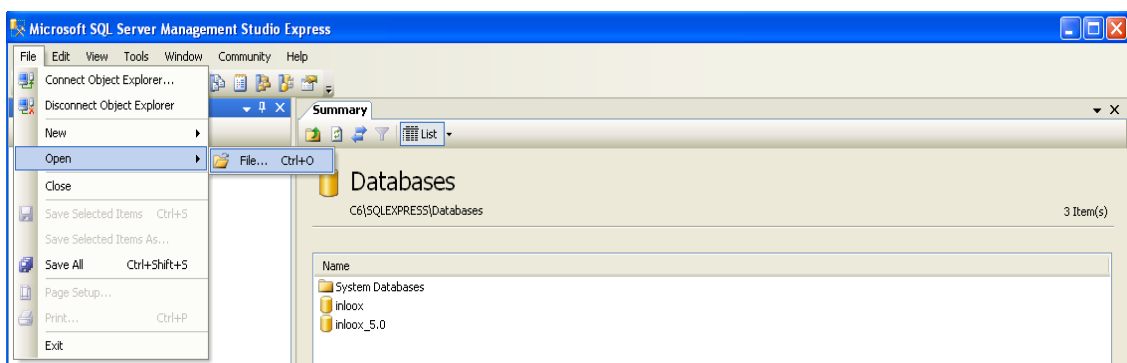
Before the database new import begins, **please backup your existing database first**. If no backup takes place, data loss can occur, in particular if the import procedure fails.

Proceed as follows after the Backup:

1. Start **SQL Server Management studio**
1. Connect to the server, which contains the desired database, via **SQL Server Management Studio**
2. Extend the **databases** node

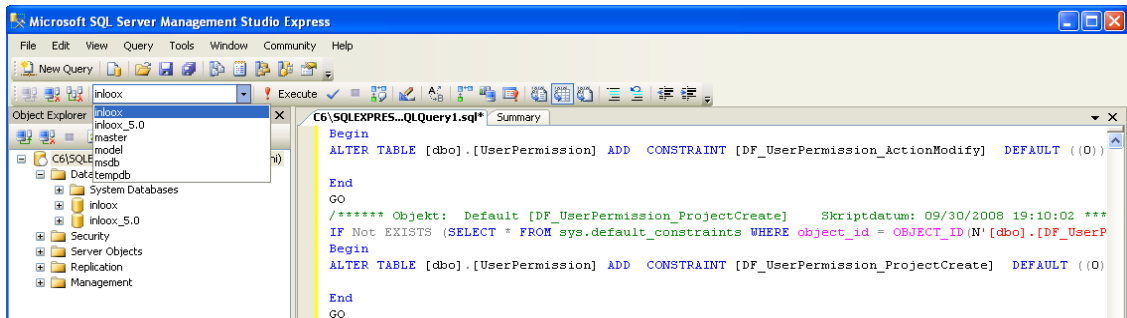


3. Click on **File >> Open >> File...** in the menu



4. Select the script **Empty_Database.sql**. Click on **OK**.
The Script is opened in the window on the right hand side.

5. Select the database in the toolbar, which should be new imported:

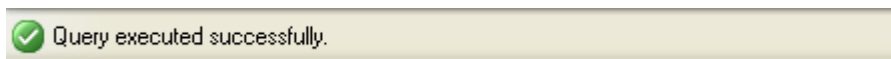


6. Click in the toolbar on **Execute**.

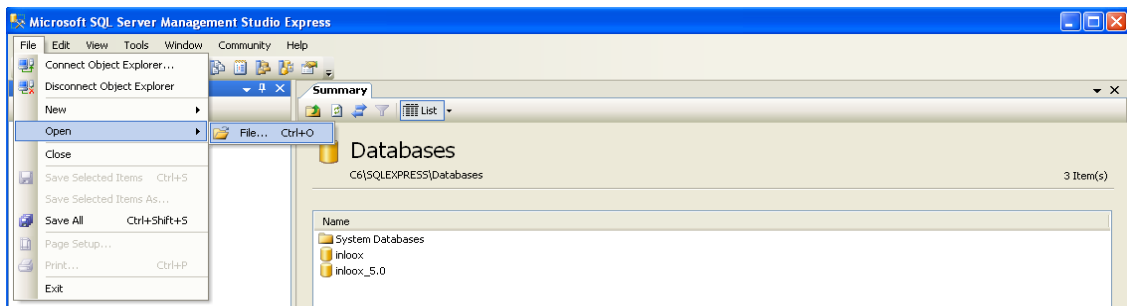


With this action you delete all contents of the selected database.

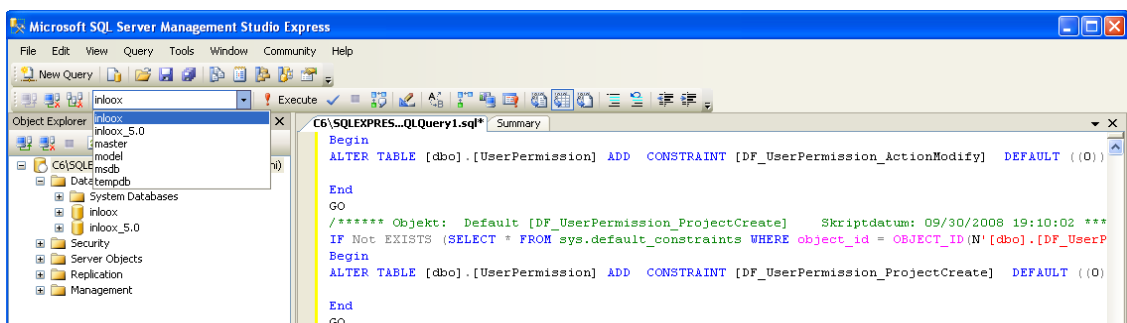
7. Check the status of the delete Query.
The following status message should appear in the status area on the lower right:



8. Click in the menu **File >> Opening >> File...**



9. Select the Script **Database_Converted.sql**. Click on **OK**.
10. If necessary answer the question „long text lines“ with **Yes**.
The Script is opened in the window on the right side.
11. Examine that the database is selected in the toolbar, which should receive imported data



12. Click on **Execute** in the tool bar to import data.
13. Finally examine the status of the import.
The following status message should appear in the status area lower right:

