



Project management – integrated into Outlook

InLoox PM 7.x Configure Microsoft SQL Server for SQL-
Authentication

An InLoox Whitepaper

Published: October 2011

You can find up-to-date information at <http://www.inloox.com>

The information contained in this document represents the current view of IQ medialab on the issues discussed as of the date of publication. Because IQ medialab must respond to changing market conditions, it should not be interpreted to be a commitment on the part of IQ medialab, and IQ medialab cannot guarantee the accuracy of any information presented after the date of publication.

This White Paper is for informational purposes only. IQ MEDIALAB MAKES NO WARRANTIES, EXPRESS, IMPLIED OR STATUTORY, AS TO THE INFORMATION IN THIS DOCUMENT.

Complying with all applicable copyright laws is the responsibility of the user. Without limiting the rights under copyright, no part of this document may be reproduced, stored in or introduced into a retrieval system, or transmitted in any form or by any means (electronic, mechanical, photocopying, recording, or otherwise), or for any purpose, without the express written permission of IQ medialab GmbH.

© 2011 InLoox GmbH. All rights reserved.

IQ medialab and InLoox are either registered trademarks or trademarks of IQ medialab GmbH in Germany and/or other countries.

The names of actual companies and products mentioned herein may be the trademarks of their respective owners.

Content

Configure Microsoft SQL Server for SQL-Authentication.....	1
System requirements.....	1
Database configuration for SQL-Authentication	1
Create a connection key with the System Manager.....	4

Configure Microsoft SQL Server for SQL-Authentication

System requirements

- Microsoft SQL Server or Microsoft SQL Server Express Edition
- SQL Management Studio Express

Microsoft SQL Server Express Edition as well as the SQL Management Studio Express can be downloaded free of charge under the following links.

<http://www.microsoft.com/downloads/details.aspx?displaylang=en&FamilyID=31711d5d-725c-4afa-9d65-e4465cdf1e7>

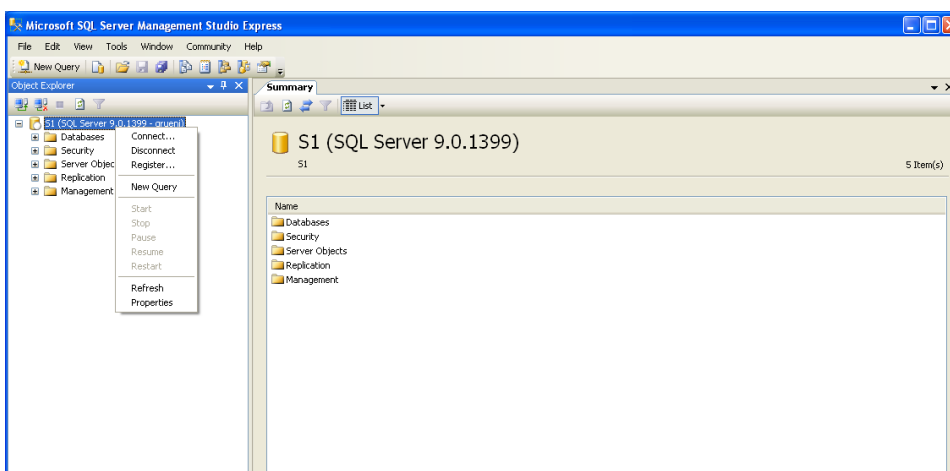
<http://www.microsoft.com/downloads/details.aspx?FamilyID=6053c6f8-82c8-479c-b25b-9aca13141c9e&displaylang=en>

Database configuration for SQL-Authentication

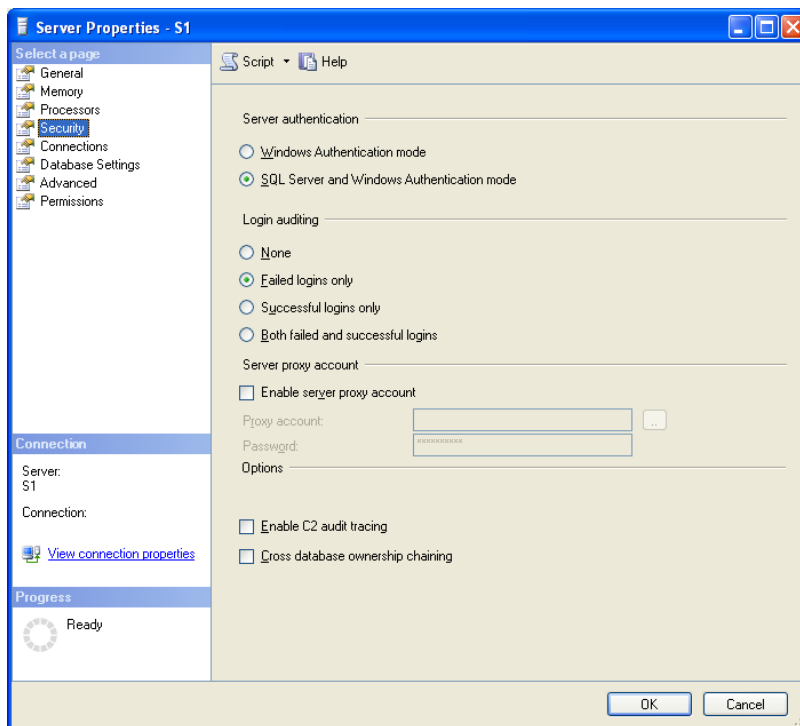
1. Start SQL Management Studio and connect to your database



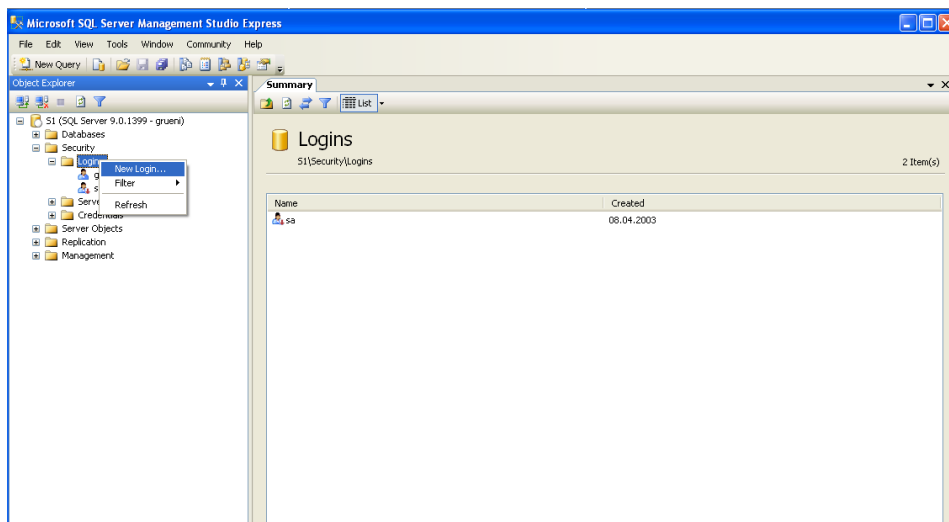
2. Right click on the entry of the server in the list and select **Properties** in the context menu



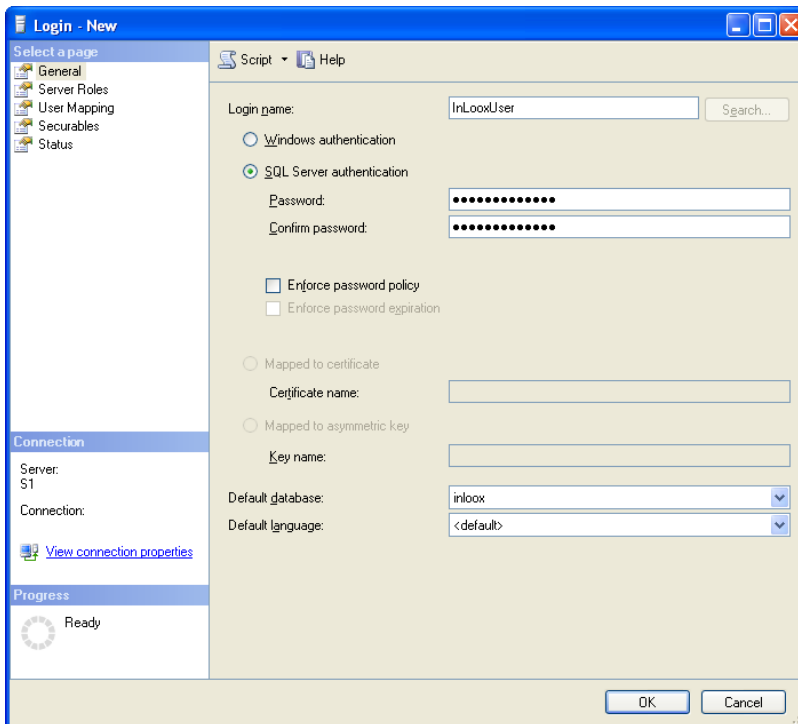
- In the dialog click on **Security**.
Select SQL Server- and Windows-Authentication



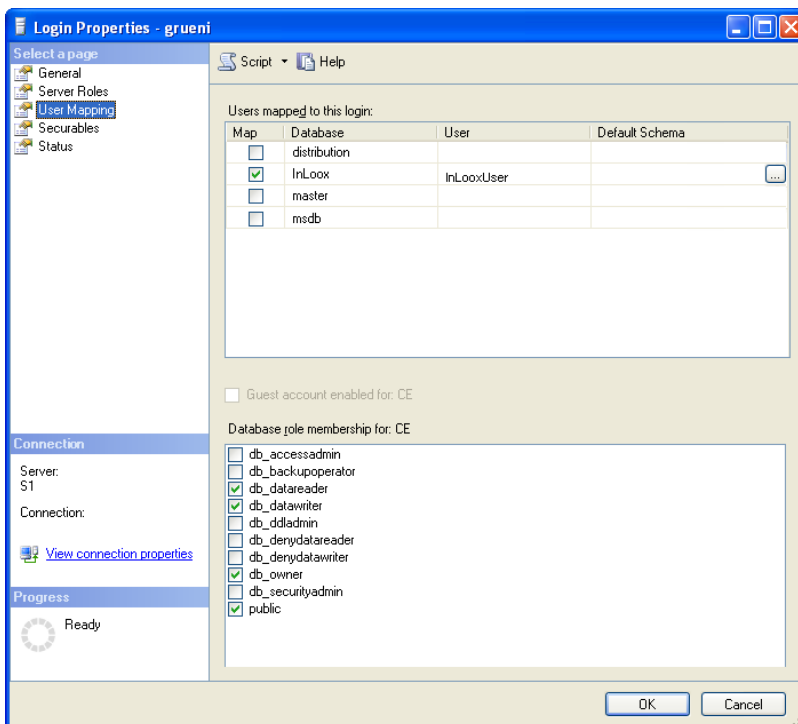
- Click now on **OK**.
- Click now on **Security-** > right click on **Logins-** > **New Login**



6. Select **SQL Server-Authentication** in the next dialog and enter a user name and a password. Deactivate **Enforce password policy**
Select **InLoox** as standard database



7. Click on **User Mapping**, select the database (InLoox) and set the permissions **db_datareader**, **db_datawriter**, **db_owner**. Accept with **OK**.



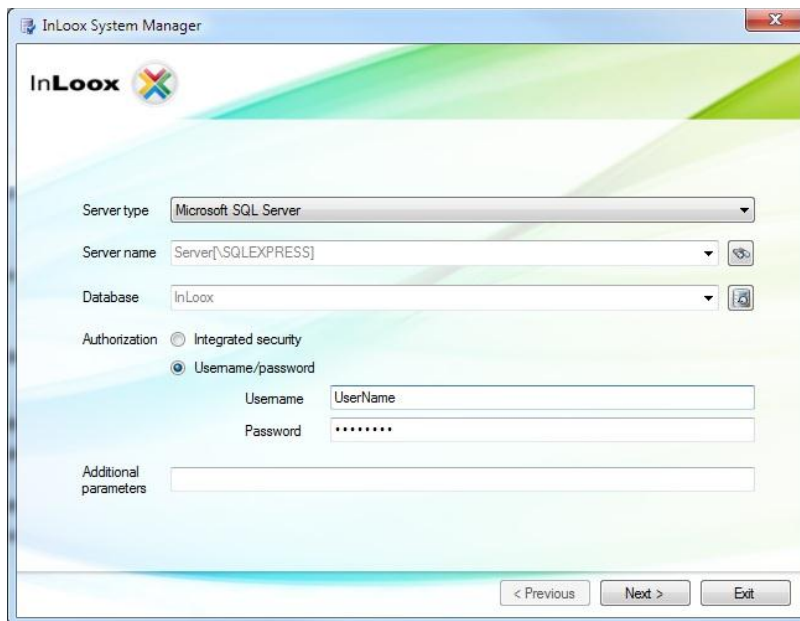
8. Right click on the entry of the server again and select **Restart**. The SQL Server will be restarted and the authentication settings are used.

Create a connection key with the System Manager

Download the System Manager from:

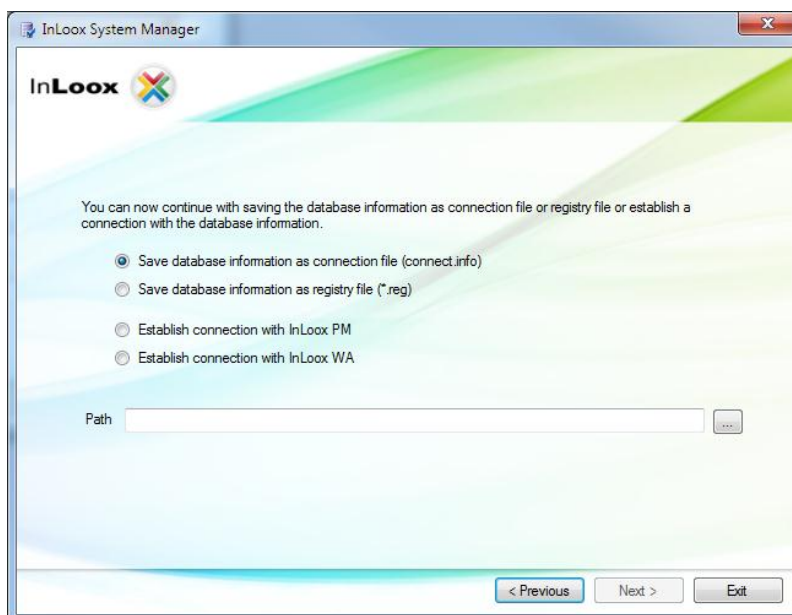
<http://www.inloox.com/download/release/InLooxSystemManager.zip>

1. Start the System Manager
2. Specify the server name, select **username/password** and enter user name and password which were created before.



The screenshot shows the 'InLoox System Manager' dialog box. It features the InLoox logo at the top left. Below the logo, there are several input fields and options: 'Server type' is set to 'Microsoft SQL Server'; 'Server name' is 'Server[\\SQLEXPRESS]'; 'Database' is 'InLoox'; 'Authorization' has two radio buttons, with 'Username/password' selected; 'Username' is 'UserName'; 'Password' is masked with dots; and 'Additional parameters' is an empty text box. At the bottom right, there are three buttons: '< Previous', 'Next >', and 'Exit'.

3. Click on **Create Connection**



The screenshot shows the 'InLoox System Manager' dialog box at a later stage. It displays the InLoox logo and a message: 'You can now continue with saving the database information as connection file or registry file or establish a connection with the database information.' Below this message are four radio button options: 'Save database information as connection file (connect.info)' (selected), 'Save database information as registry file (*.reg)', 'Establish connection with InLoox PM', and 'Establish connection with InLoox WA'. There is a 'Path' text box with a browse button to its right. At the bottom right, there are three buttons: '< Previous', 'Next >', and 'Exit'.

4. You have 3 possibilities now:

- You can store the connection key as **Connection File**, which you can use for new client installations. Simply put the generated file into the installation folder.
- You can also generate a **Registry Import File**. It can be used to change the database on existing clients. Make a double click on the generated file.
- Save the new information directly into the registry of the current client.